

Why You Should Read This: The document below reviews the environmental impact likely from a project. This project is planned to be federally funded through your tax dollars; therefore, you are entitled to take part in its review. If you have concerns about the environmental impact of this project, raise them now. We encourage public input in this decision making process.



IOWA STATE REVOLVING FUND
REAFFIRMATION OF A FINDING OF NO SIGNIFICANT IMPACT

December 18, 2024

To: All Interested Citizens, Government Agencies, and Public Groups

An environmental review has been performed based on the procedures for implementing the National Environmental Policy Act (NEPA), for the proposed agency action below:

Applicant: City of Ruthven
County: Palo Alto
State: Iowa

SRF Number: FS-74-15-DWSRF-006
Iowa DNR Project Number: W2014-0453

The purpose of this letter is to provide you with a State Revolving Fund (SRF) status update. This project has previously been reviewed by the DNR and a Finding of No Significant Impact (FNSI) was issued on May 2, 2022. This FNSI is hereby Reaffirmed including the construction of a new building to house the various treatment equipment; the existing building will not be demolished.

A petition had been made by Lenny Larson with ISG on behalf of the City of Ruthven as of May 2, 2024 to revise this project scope to include the above listed work as a continuation of the ongoing construction project. The scope addition had not been previously evaluated by the DNR. It has now been determined by the DNR, and the State Historical Preservation Office has concurred (R&C #240974483), that the additional work will result in "No Historic Properties Affected." The above project addition conforms to the criteria in 567 Iowa Administrative Code 44.10(3) related to compliance with the National Environmental Policy Act of 1969. No adverse effect or significant environmental impact is foreseen at this time due to this addition.

This action is taken on the basis of a careful review of the engineering report, the environmental assessment and other supporting data which are on file at the Department of Natural Resources' office in Des Moines, Iowa. These are available for public review upon request. This Department will not take any administrative action on the project for at least thirty (30) calendar days from the above date. Persons disagreeing with the above environmental decision may submit comments to the department during this period. Your comments can be sent to SRF-PC@dnr.iowa.gov or directly to me at Jean.Mayne@dnr.iowa.gov or (515) 491-7565.
Sincerely,

Jean Mayne
Environmental Specialist
6200 Park Ave, Suite 200
Des Moines, IA 50321

Enclosure: Project Map

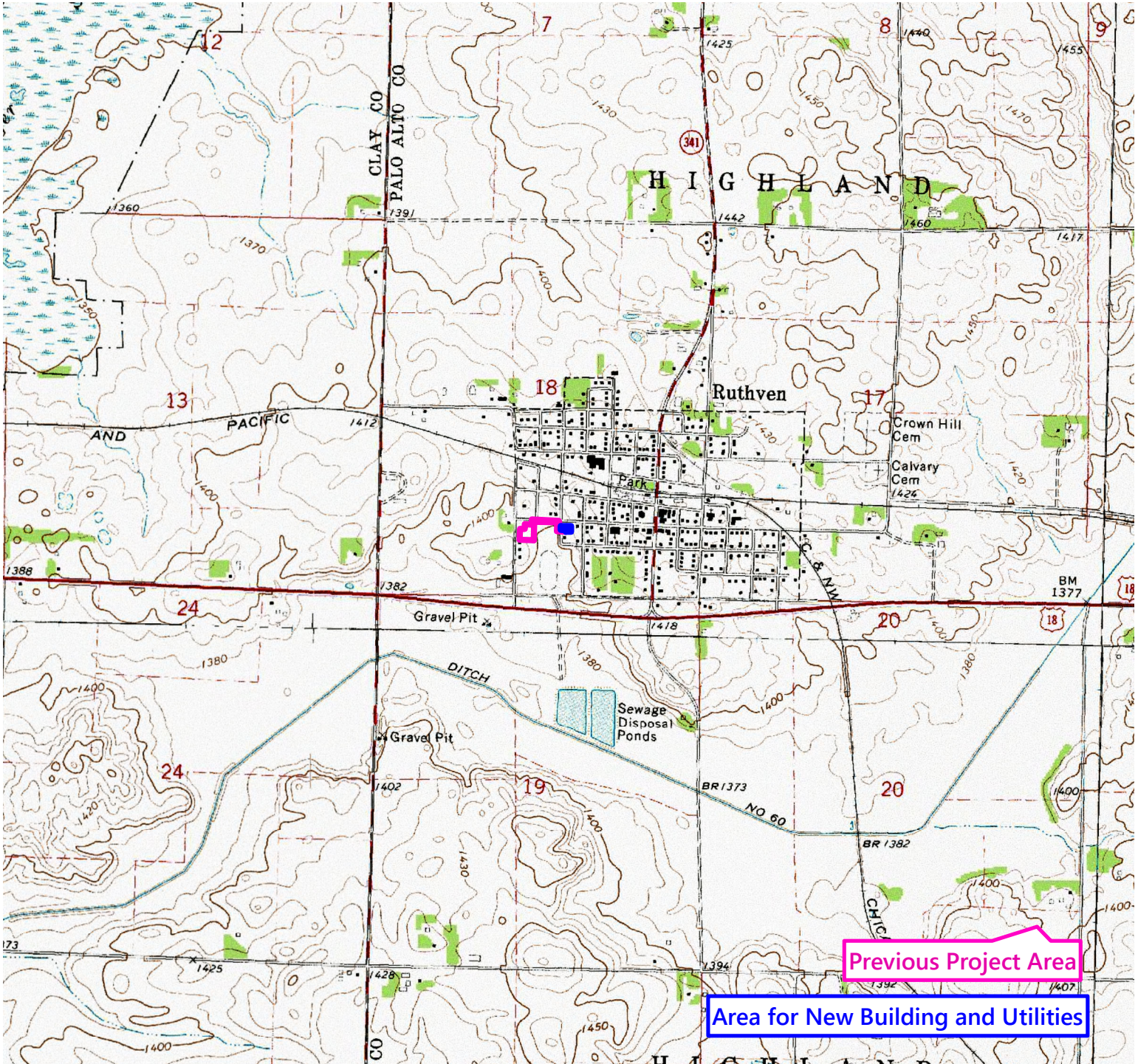
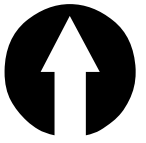
Distribution

List (email): ISG engineering
NWIPDC
Edward Boling, Council on Environmental Quality
Jake Hansen, Iowa Department of Agriculture and Land Stewardship
Ken Sharp, Ken Sharp, Iowa Department of Health & Human Services
Mindy Wells, Iowa Department of Health & Human Services
Chad Sands, Iowa Economic Development Authority
Alicia Vasto, Iowa Environmental Council
Michael Schmidt, Iowa Environmental Council
Susan Heathcote, Iowa Environmental Council
Tracy Scebold, Iowa Finance Authority
Tony Toigo, Iowa Finance Authority
Lee Wagner, Iowa Finance Authority
Rick Andriano, Iowa Finance Authority
Mickey Shields, Iowa League of Cities
Jane Clark, Sierra Club
Josh Mandelbaum, Environmental Law and Policy Center
Kate Sand, USDA Rural Development
Tokey Boswell, USDO, National Park Service, Midwest Region
Kraig McPeck, Fish and Wildlife Service, Rock Island Field Office
Ann D'Alfonso, USEPA Region VII
Kelly Beard-Tittone, USEPA Region VII
Ruthven newspaper

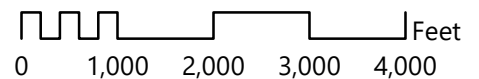


STATE
REVOLVING FUND
IOWA

USGS 7.5' Quad: Ruthven
S 18, T96N, R 34W
Date: 1972

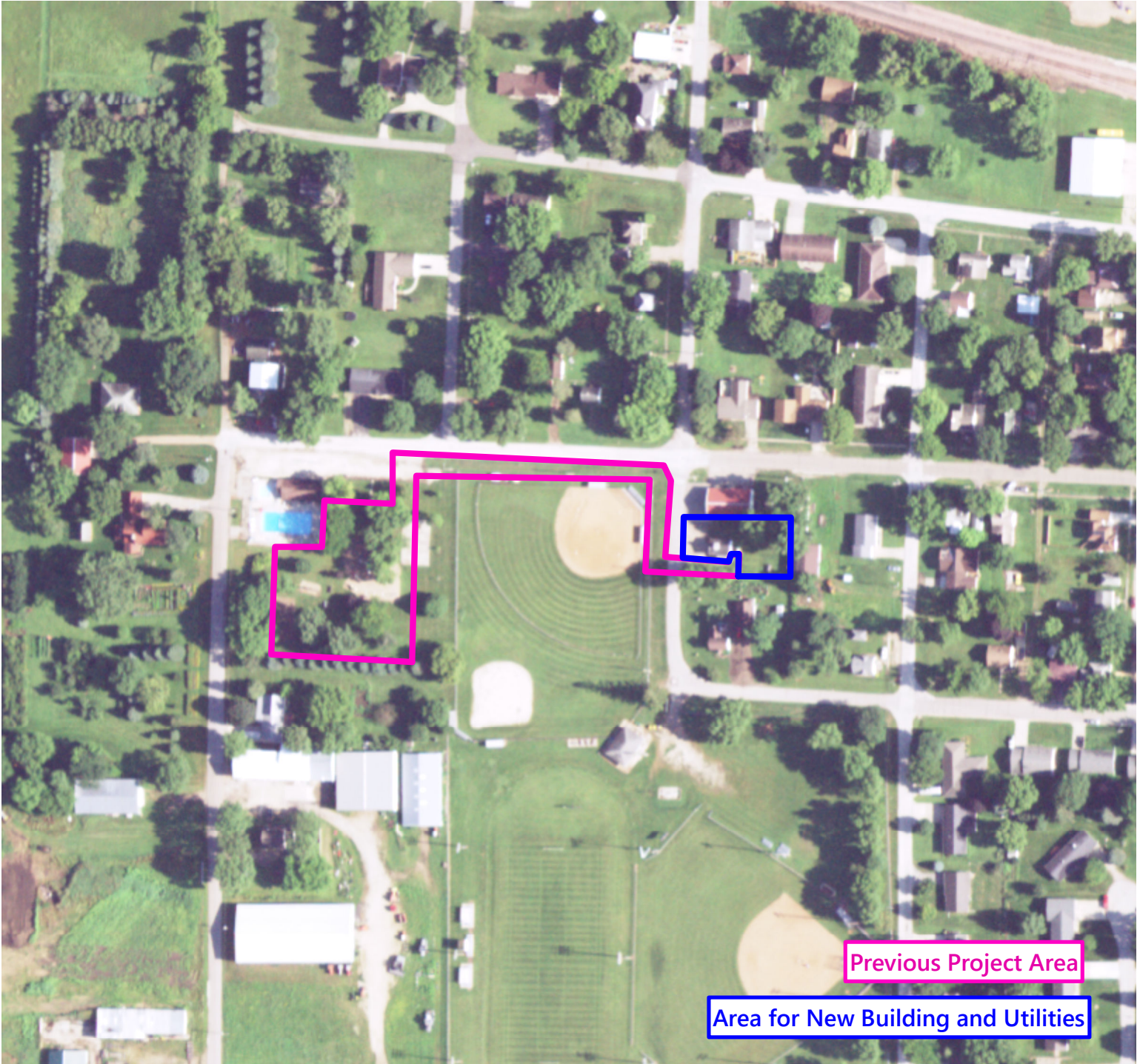
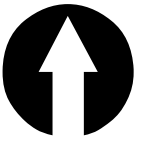


Scale: 1 inch = 2,000 feet



Topographic Map

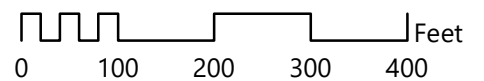
Ruthven DWSRF - New Building
Ruthven, Iowa (Palo Alto County)

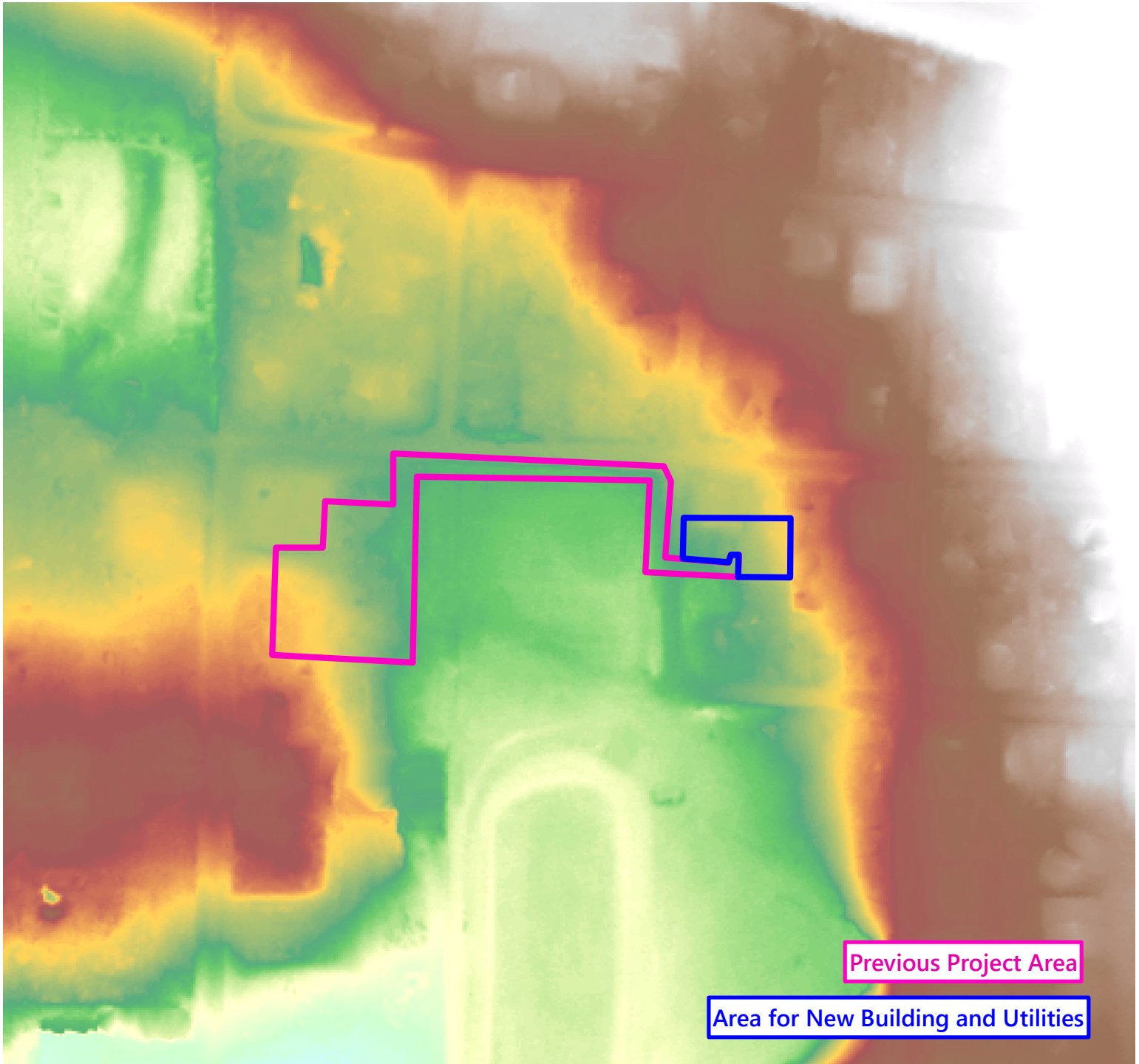
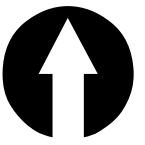


Aerial Photograph

Ruthven DWSRF - New Building
Ruthven, Iowa (Palo Alto County)

Scale: 1 inch = 199 feet

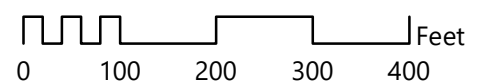


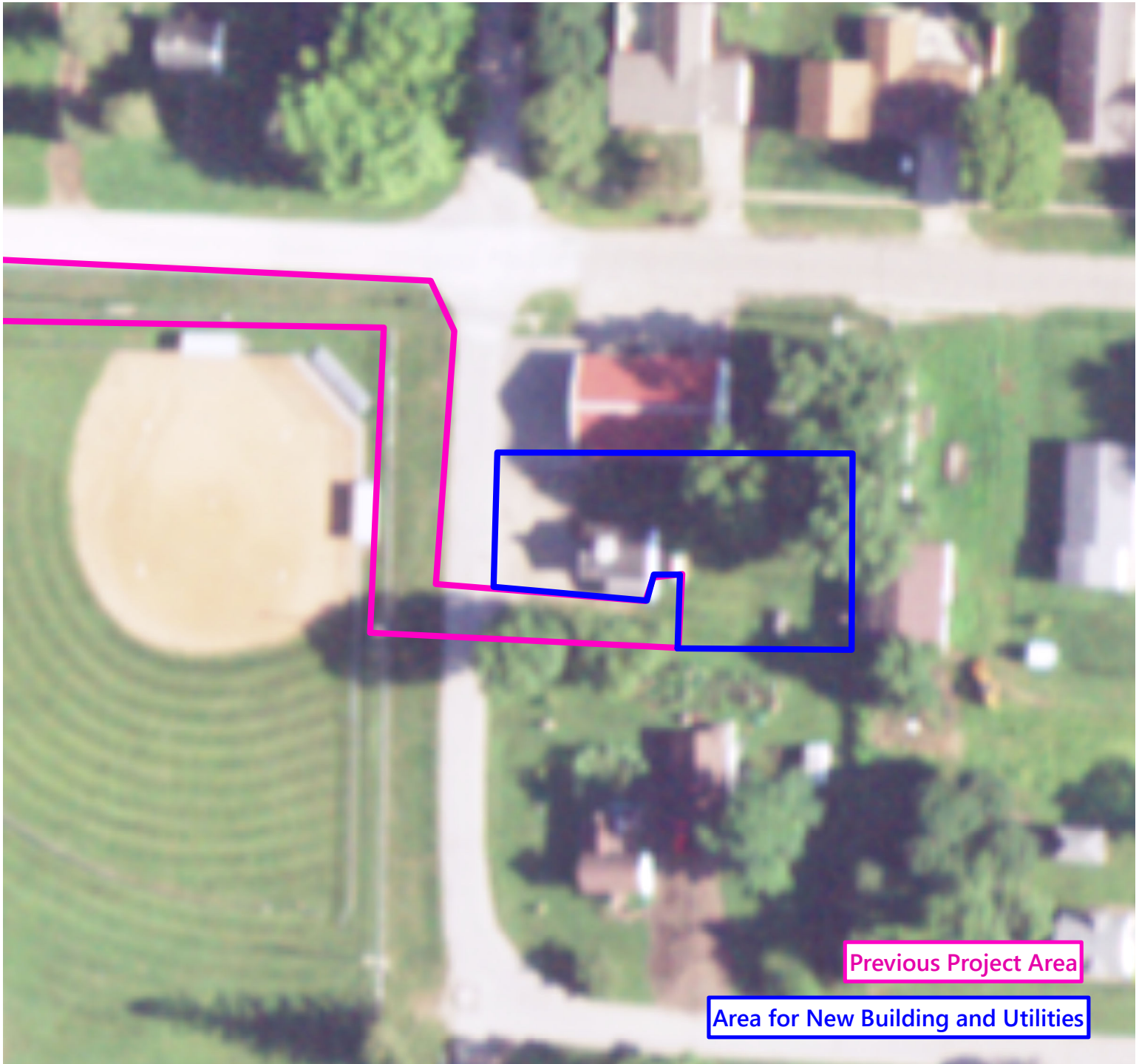
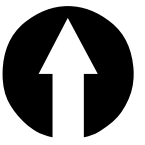


LiDAR

Ruthven DWSRF - New Building
Ruthven, Iowa (Palo Alto County)

Scale: 1 inch = 199 feet





Aerial Photograph

Ruthven DWSRF - New Building
Ruthven, Iowa (Palo Alto County)

Scale: 1 inch = 60 feet

